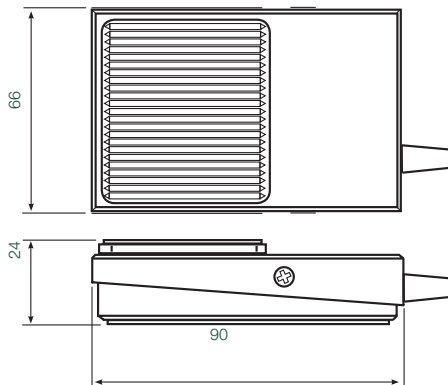


- Versatile, compact footswitch
- Durable and reliable with steel housing for long life and reliability (stainless steel versions available)
- Wide choice of colours and switching functions
- Customer colours and logos available on request
- Special designs to customer specifications
- Protection IPX2 or IPX7 (IPX8 on request)
- Medical versions
- Available as multiple pedal versions
- Non-electric versions possible (see air switch information)



Reference dimensions



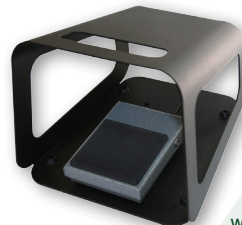
6289 - Range options and specifications

		Stock models							
Model part no.		6289-WO	6289-CC	6289-PP	6289-DO	6289-SC	6289-DA	6289-CT	6289-WS
Depth	mm					90			
Width	mm					66			
Height	mm					24			
Weight	Kg					0.38			
Material	Body	16 SWG mild steel, powder coat grey hammertone							Stainless steel
	Tread	Polypropylene, black							
	Guard	18 SWG mild steel, powder coat grey hammertone							
No. of poles & action		SPST N/O	SPCO	SPST Latching	DPST N/O	SPST N/O	DPST staggered	SPCO	SPST N/O
Cable		2 core + earth	3 core + earth	2 core + earth	4 core + earth	2 core + earth	4 core + earth	Terminal block	2 core + earth
Cable length as standard	m	2	2	2	2	2	2	n/a	2
Cable O/D	mm	6.8 (nom)	6.8 (nom)	6.8 (nom)	6.8 (nom)	6.8 (nom)	6.8 (nom)	n/a	6.8 (nom)
Current rating at 250V AC (½ HP)	A	6(1.5)	6(6)	6(3)	3(3)	6(3)	3(3)	6(3)	3(3)
IP rating of internal switch module		IPX7	IPX2	IPX2	IPX2	IPX2	IPX2	IPX2	IPX7
Standards		Footswitch: low voltage directive 2014/35/EU, EN 60950; Microswitch: EN 61058-2-1, EN 61058							
Operating temperature	°C					-5 to + 40			

Various connection cables are available (up to protection IPX8).
Low volume surcharge for non-standard models

Accessories

Part Number	Description
6202-0001	Single Black RAL 9005 guard
6202-0002	Single Grey RAL 7035 guard
6202-0003	Twin Grey RAL 7035 guard



With 6202 Guard